

# Your best option when the unexpected happens



## CENTRA



Telehealth/ Centra-24/7



Primary Care



Urgent/ Walk-In-Care



Emergency Care



Cold/cough



Ear aches and sore throats



Cold, flu, cough low fever



Intense chest pain or sudden shortness of breath



Sinus infection



Nauseous



Vomiting/ Diarrhea



Extremely high fever



Sore throat



Minor cuts and bruises



Sprains and possible broken bones



Severe trauma such as broken bones breaking through the skin



Rash/ Allergies



Vaccinations



Stitches



Seizures or convulsions



Fever/Headache



Wellness visits & prescriptions



Urinary tract infections



Head injuries

Make an appointment here



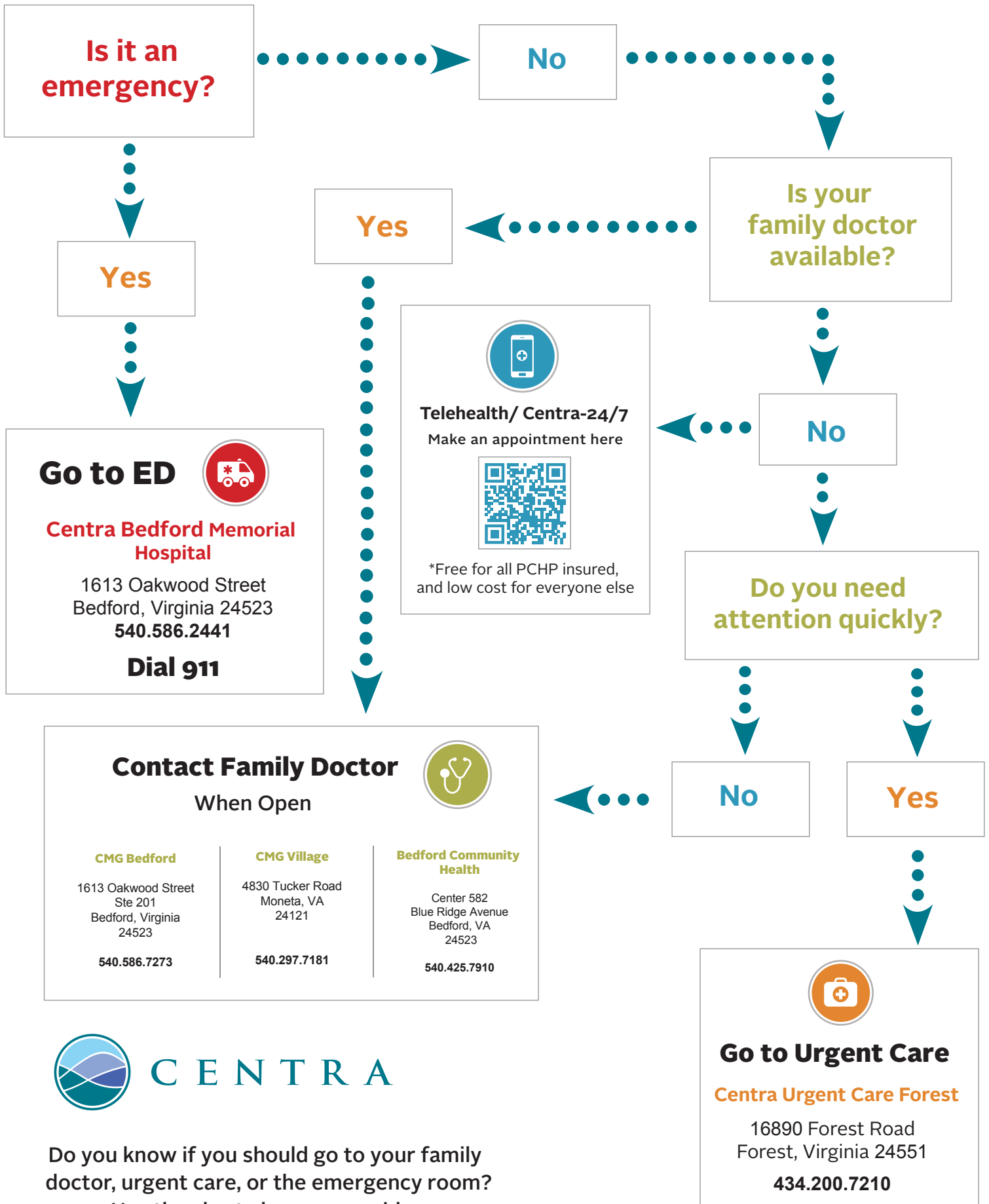
\*Free for all PCHP insured, and low cost for everyone else

Call 434.200.3908  
or 434.200.5200

Call 434.200.7210

Call 911

# Choosing Your Healthcare Path



Do you know if you should go to your family doctor, urgent care, or the emergency room? Use the chart above as a guide.