

Your best option when the unexpected happens



CENTRA



Telehealth/ Centra-24/7



Primary Care



Urgent/ Walk-In-Care



Emergency Care



Cold/cough



Ear aches and sore throats



Cold, flu, cough low fever



Intense chest pain or sudden shortness of breath



Sinus infection



Nauseous



Vomiting/ Diarrhea



Extremely high fever



Sore throat



Minor cuts and bruises



Sprains and possible broken bones



Severe trauma such as broken bones breaking through the skin



Rash/ Allergies



Vaccinations



Stitches



Seizures or convulsions



Fever/Headache



Wellness visits & prescriptions



Urinary tract infections



Head injuries

Make an appointment here



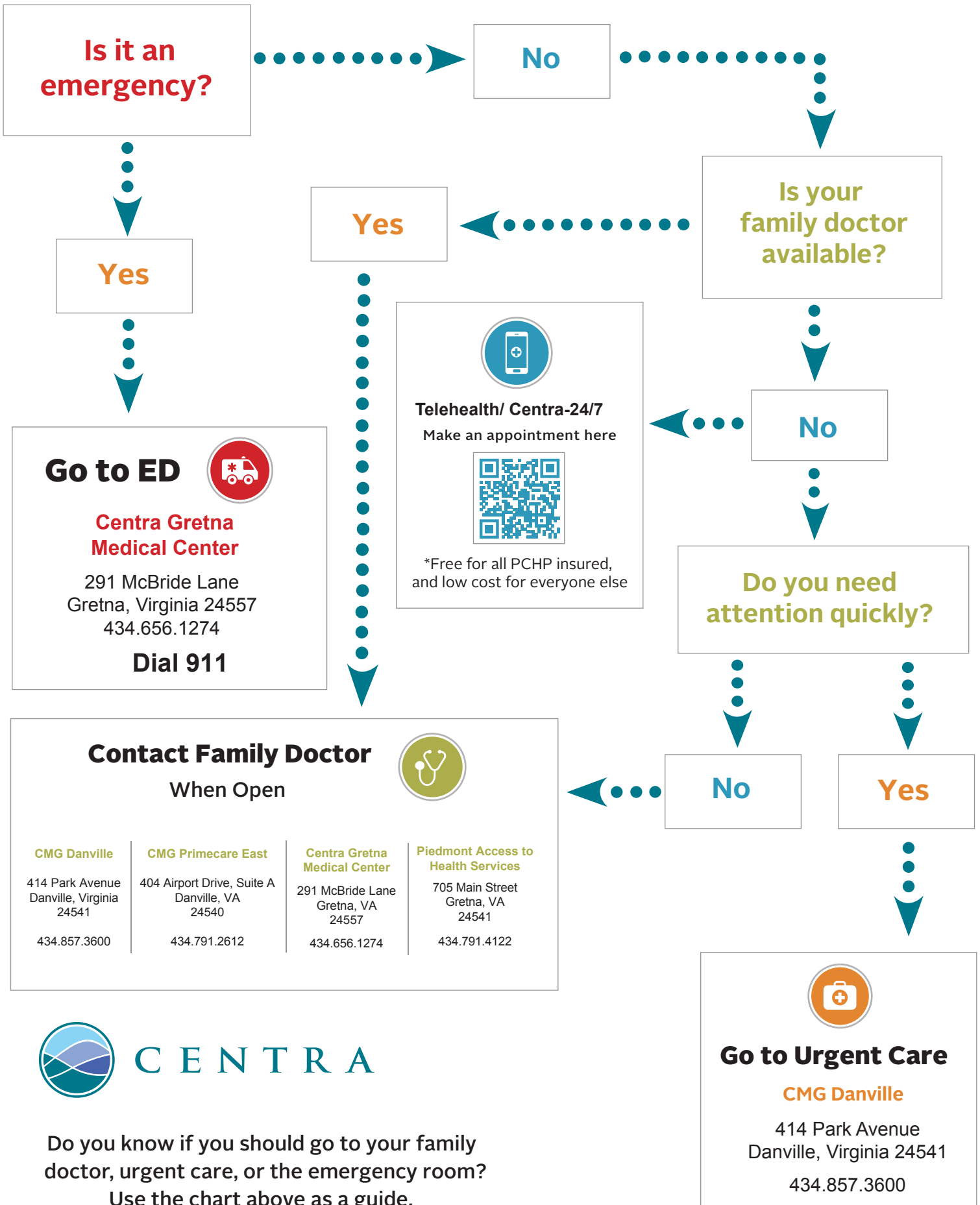
*Free for all PCHP insured, and low cost for everyone else

Call 434.200.3908
or 434.200.5200

Call 434.200.7210

Call 911

Choosing Your Healthcare Path



Do you know if you should go to your family doctor, urgent care, or the emergency room?
Use the chart above as a guide.