

# Your best option when the unexpected happens



## CENTRA



Telehealth/ Centra-24/7



Primary Care



Urgent/ Walk-In-Care



Emergency Care



Cold/cough



Ear aches and  
sore throats



Cold, flu,  
cough  
low fever



Intense chest  
pain or sudden  
shortness of  
breath



Sinus infection



Nauseous



Vomiting/  
Diarrhea



Extremely  
high fever



Sore throat



Minor cuts  
and bruises



Sprains and  
possible  
broken bones



Severe trauma  
such as broken  
bones breaking  
through the skin



Rash/ Allergies



Vaccinations



Stitches



Seizures or  
convulsions



Fever/Headache



Wellness visits  
& prescriptions



Urinary tract  
infections



Head injuries

Make an appointment here



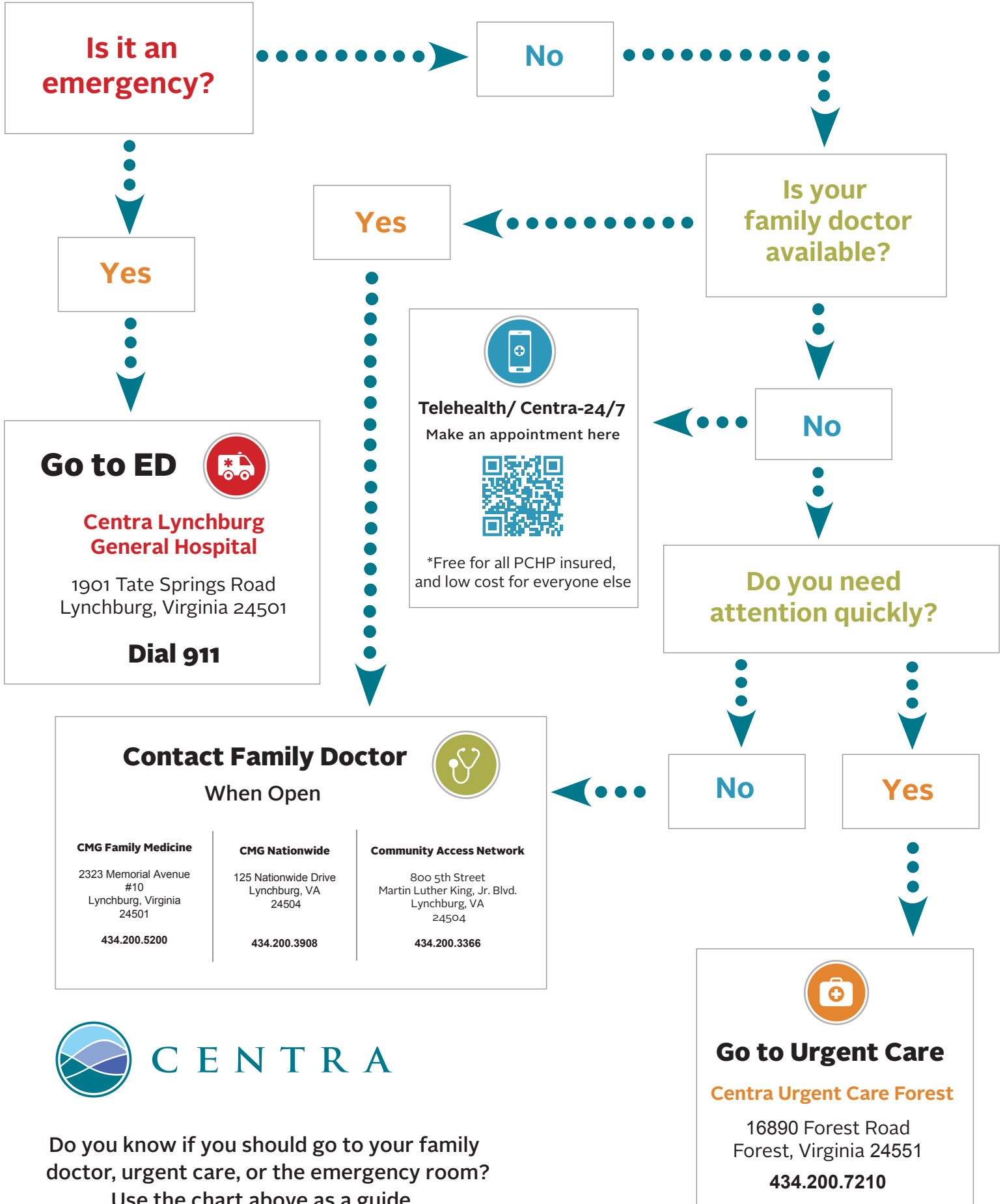
\*Free for all  
PCHP insured,  
and low cost  
for everyone else

Call 434.200.3908  
or 434.200.5200

Call 434.200.7210

Call 911

# Choosing Your Healthcare Path



Do you know if you should go to your family doctor, urgent care, or the emergency room?  
Use the chart above as a guide.